

## FLAT PLATE COLLECTOR

- for water, space and process heating with 60°C ~ 80°C temperature requirement.

### Scope of delivery:

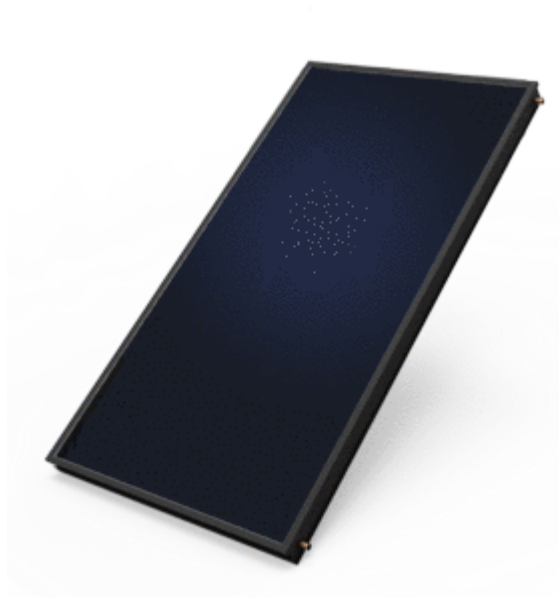
- Fully pre-assembled collector unit

### Installation types:

- Pitched roof, flat roof, on-wall

### Advantages and benefits:

- Higher efficiency for temperature range under 55°C.
- Short installation time due to complete pre-assembled collectors.
- Easy integration with buildings.
- High explosion protection performance.
- Without overheat problem during summer season.



## SPECIFICATION

Series	FP2000
Collector dimensions (L x H x D)	2000 x 1000 x 80mm
Gross surface area	2m <sup>2</sup>
Aperture area	1.88m <sup>2</sup>
Absorber coating material	Blue Titanium / Black Chrome
Absorber coating thickness	0.20~0.26mm

Absorber sheet material	Aluminum
Absorber sheet thickness	0.3mm
Absorption rate	≥92%
Emission rate	≤5.8%
Header tube number	2
Header tube size/ material	φ22 x 0.6mm / Copper
Riser tube number	8
Riser tube size/ material	φ10 x 0.5 mm/ Copper
Medium volume	2.1L
Cover material	Low iron tempered textured glass
Cover thickness	3.2mm
Cover transmittance	≥90%
Insulation material	Polyster / Fiberglass
Insulation thickness	35mm
Frame material/ thickness	Aluminum / ≥1.0mm
Back plate material/ thickness	Galvanized sheet / 0.3mm
Test pressure	1.2Mpa
Max. working pressure	0.8Mpa
Net weight	36kg
Collector efficiency $\eta_0$	78%
Max. stagnation temperature	186°C